

INTRODUCTION

To make the environment better, HiTi is always seeking a way to reduce carbon emission of product. New design of P510 consumables can greatly lower the use of plastic material which generates carbon emission in the course of manufacturing.

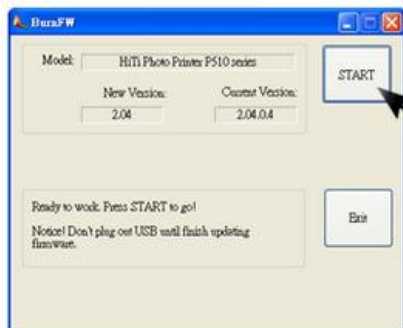
Using the new design of P510 consumables can be hassle-free, and please follow the instruction below to get the consumables working well on your P510 printer without any trouble. PLEASE NOTE THAT BEFORE USING THE NEW DESIGN OF P510 CONSUMABLES, THERE'S NEED TO UPGRADE THE FIRMWARE OF YOUR P510 PRINTER IN ADVANCE.

FIRMWARE UPGRADE

Firstly, please connect the printer with your computer thru USB cable and then power on the printer. Updated firmware is stored in the CD bundled with the consumables. If it is missing, please contact the dealer nearest to you for assistance.

名稱	修改日期	類型	大小
P510K_2.04.0.4	2015/3/2 上午 10...	檔案資料夾	
P510L_2.04.0.4	2015/3/2 上午 10...	檔案資料夾	
P510S_1.21.0.4	2015/3/2 上午 10...	檔案資料夾	
P510S_2.04.0.4	2015/3/2 上午 10...	檔案資料夾	
P510Si_1.21.0.4	2015/3/2 上午 10...	檔案資料夾	
P510Si_2.04.0.4	2015/3/2 上午 10...	檔案資料夾	
P518A_1.21.0.4	2015/3/2 上午 10...	檔案資料夾	
P518S_1.21.0.4	2015/3/2 上午 10...	檔案資料夾	
UpdateFW.exe	2015/2/11 下午 0...	應用程式	48 KB
UpdateFw.ini	2015/2/11 下午 0...	組態設定	1 KB

Double clicking the file "UpdateFW.exe" to run the upgrade automatically

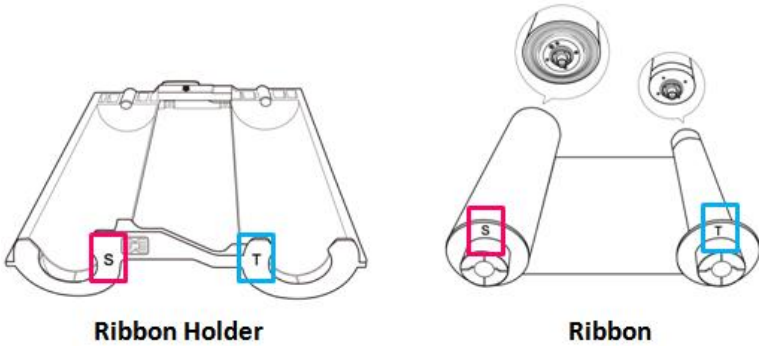


Clicking **START** button to begin the process. Firmware upgrading takes around 6-8 minutes and please **DO NOT** interrupt the process, or else it would incur malfunction of the printer. Once the firmware is successfully upgraded, the printer will reset automatically.

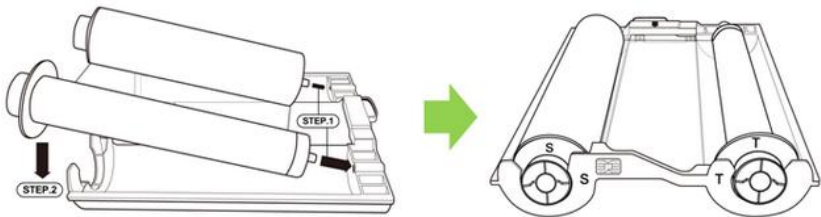
HOW TO ASSEMBLE RIBBON AND HOLDER

Open the box and identify the ribbon holder. Inside the box, there's a bundled ribbon holder and 2 sets of ribbon and paper. If any of them is missing, please contact the dealer nearest to you for assistance. Please note that the ribbon holder is a reusable part and please keep it in a safe place for future use as needed.

- Identifying the ribbon and holder: "S" & "T" mark can be found on both the ribbon and holder. It is important that S side of ribbon must meet S side of holder in the course of assembly.



- Assembling the ribbon kit as show below



- Disassembling the ribbon kit as show below

